



TC-1664SE  
Electric Stationary  
with 16 Foot Tub

## INDUSTRIAL GRINDERS

# ELECTRIC SERIES

—• Spanning over four decades, CW Mill Equipment Co., Inc. has been manufacturing electric powered grinders in addition to its diesel powered units.

—• CW's 800 HP Electric Hogzilla Grinders are what experienced buyers are looking for today with increased efficiency, reduced maintenance, massive construction, simplicity, and steady mill RPM generating amazing production from its 46" diameter, super-colossal, 12 pin, hammermill that has an 8 3/4" main shaft.

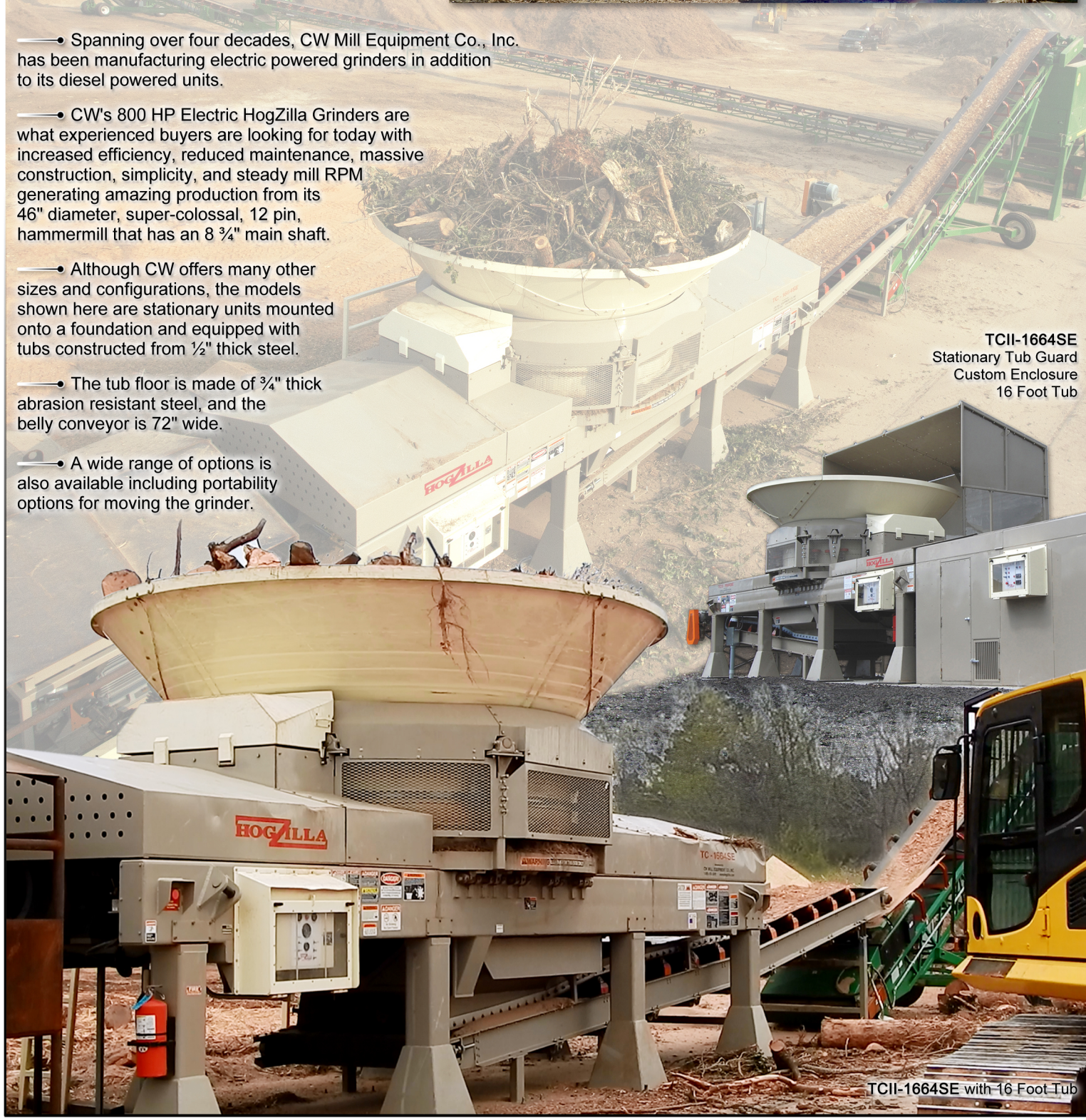
—• Although CW offers many other sizes and configurations, the models shown here are stationary units mounted onto a foundation and equipped with tubs constructed from 1/2" thick steel.

—• The tub floor is made of 3/4" thick abrasion resistant steel, and the belly conveyor is 72" wide.

—• A wide range of options is also available including portability options for moving the grinder.



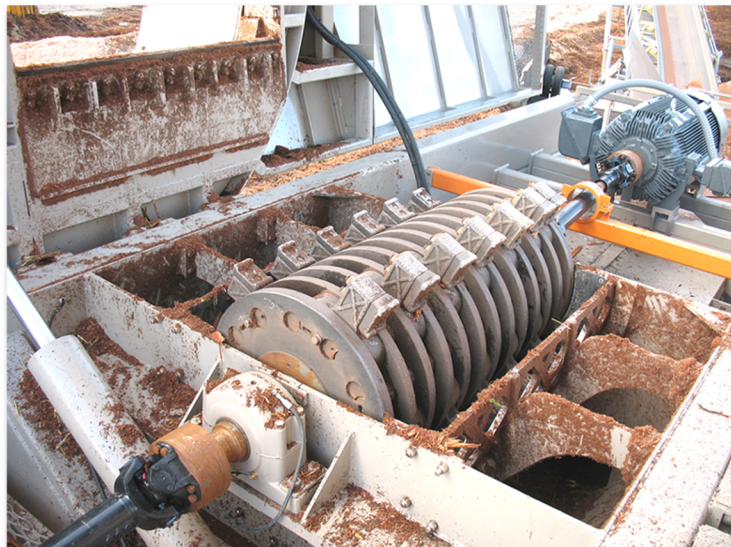
TCII-1664SE  
Stationary Tub Guard  
Custom Enclosure  
16 Foot Tub



TCII-1664SE with 16 Foot Tub



**Dual 400 hp electric motors, rated at 460 volts, drive the 46" diameter, super-colossal, 12 pin hammermill that has an 8 ¾" main shaft.**



**TCII-1664SE**  
Stationary Tub Guard  
16 Foot Tub

One of the several available thrown object restraint options is included on many of the units shown.



**HogZilla Grinders...Engineered for Performance, Built for Reliability!**

Since transportation restrictions are not a concern, we are able to build the tub with heavier duty ½" thick plate (¾" std).

The tub floor is built with ¾" Abrasive Resistant (AR) plate, (½" std).



Electric Powered Machines will Produce Savings in Many Ways ~

- Eliminate Emission Challenges
- Less Maintenance & Parts
- Easier to Start & Operate in all Seasons
- Steady RPM

**TC-1664SE**  
16 Foot Tub



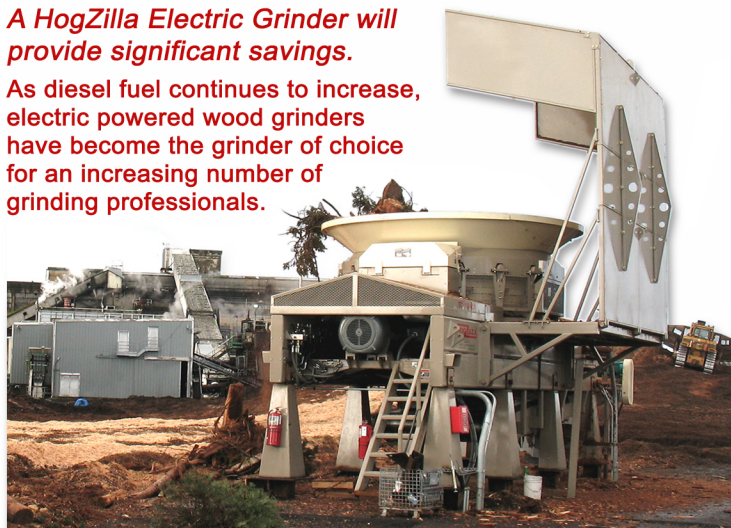
CWMillHogZilla  
HogZilla® Stationary  
Electric Powered Grinder

Scan QR code  
to watch this  
grinder in action



**A HogZilla Electric Grinder will provide significant savings.**

As diesel fuel continues to increase, electric powered wood grinders have become the grinder of choice for an increasing number of grinding professionals.



**CW MILL EQUIPMENT CO., INC.**

14 Commerce Drive - Sabetha, Kansas 66534

TOLL FREE: (800) 743-3491

PHONE: (785) 284-3454 FAX: (785) 284-3601

EMAIL: hogzilla@cwmill.com

**hogzilla.com**

